



The **TRICKY**, *Icky*, **Sticky** Stuff

*How to Drive Successful
Project Outcomes Using
Data Modeling Techniques*

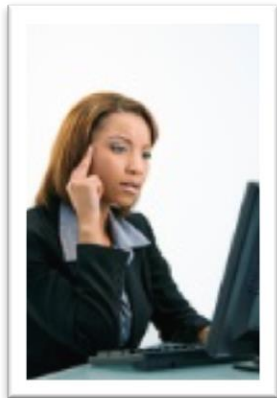


Laura Brandenburg, CBAP

Sound Check for Web-Only Participants:

If you do not hear anything, please check that your computer speakers are on and the volume is turned up. Alternatively, you may call in via phone or Skype.

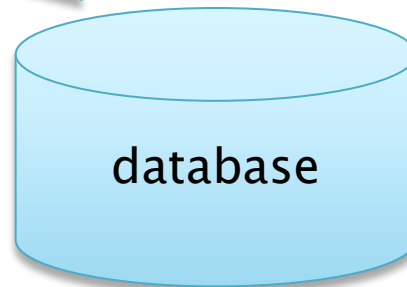
The Project Context



Enter....

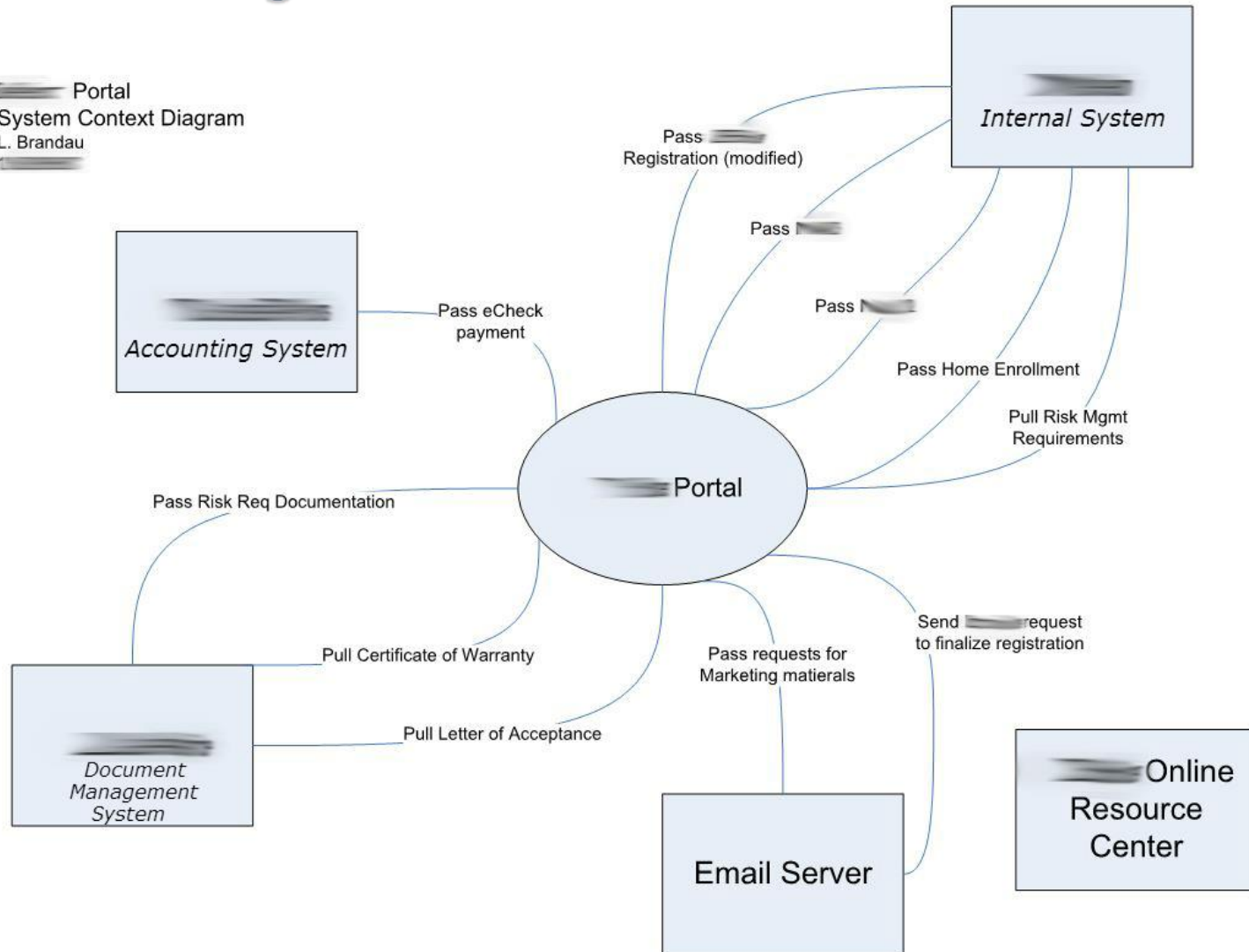
mm / dd / yyyy 

Selection 1 

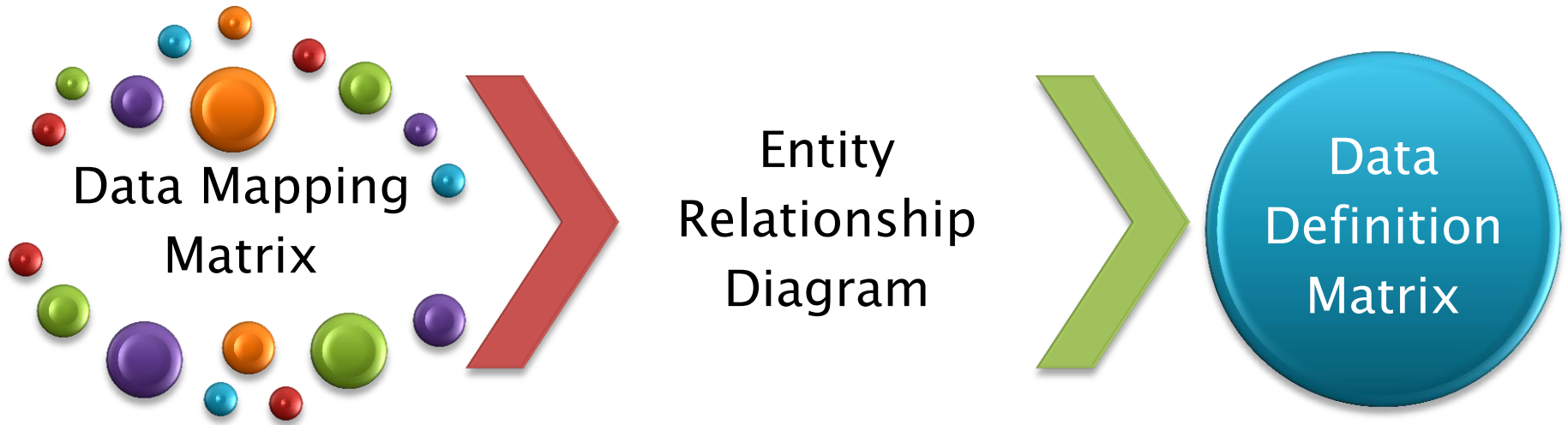


The Project Solution

Portal
System Context Diagram
L. Brandau



3 Data Modeling Techniques



Issue #1 – Get Past the Forms-Based Mindset by Data Mapping



Source Data				Target Data				Translation Rules		
Attribute Name	Required	Type	Notes	Attribute Name	Required	Type	Notes	Direct Map?	Default Value	Additional Logic
Job Title	Yes	Text	Up to 40 characters	Job Title	Yes	Text	Up to 30 characters	No	n/a	Provide a list of all truncated job titles for manual editing after conversion.
Job Description	Yes	Text	Up to 255 characters	Job Description	Yes	Text	Up to 4000 characters	Yes	n/a	
Hiring Organization	Yes	Look-Up	Look-up Active Employers	Employer	Yes	Look-Up	Look-up Active Employers	No	n/a	Make a best possible match based on employer name and other identifying data. Create a list of exceptions for manual review and mapping.

Used Wireframes to Visualize the New Data Entry Process

Project Name:
(for example, subdivision, legal description, etc)

Contact Name:

Phone Number:

Email address:

State:

Building Department:
(or County/City)

Type of Construction: Site Built Modular Manufactured on permanent foundation

What type of home(s) will be built?

Single-Family Detached

What is the anticipated sales price of the homes?

Less than 1M

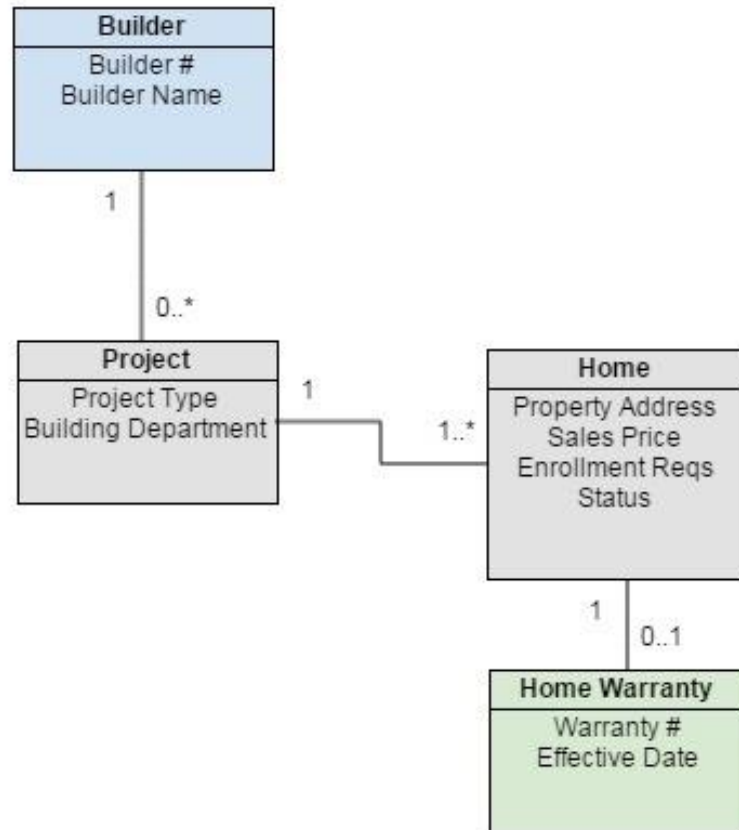
\$1M and above, but less than \$2M

\$2M and above, but less than \$5M

\$5M or greater

Homes you are building in this Subdivision

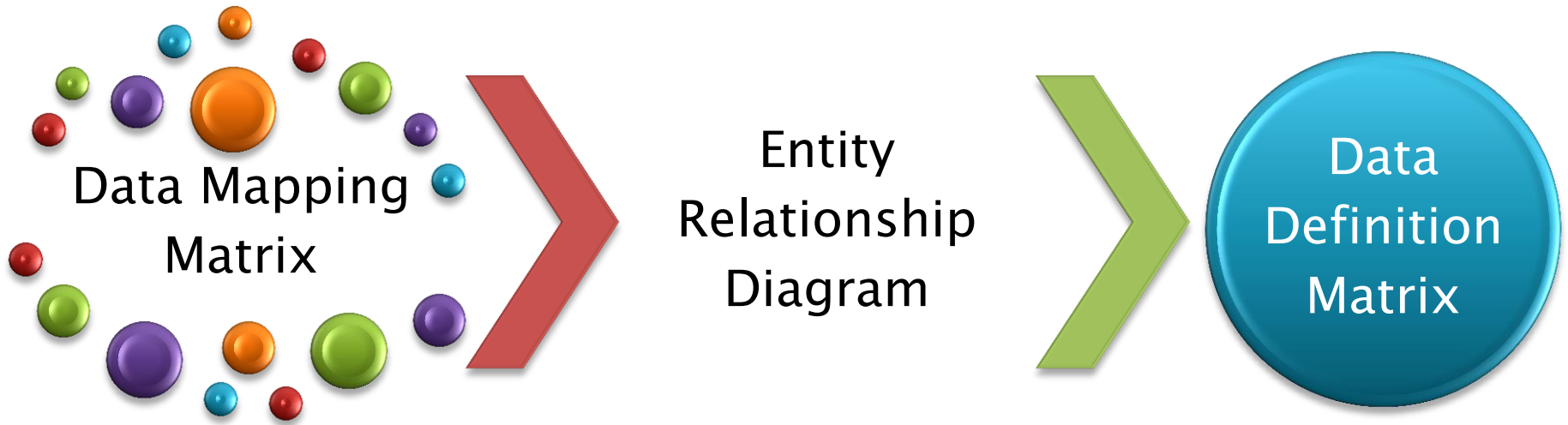
Issue #2 – Reconcile Business and Tech Speak with an ERD



Issue #3 - Communicate the Details with a Data Dictionary

Attribute Name	Source	Required	Type	Database Field Name	Output	Default Values	Notes
Street Address	Home	Yes	Text	StreetAddress	XYZ Form		Must be unique to project.
City	Project	Yes	Text	City	XYZ Form		Default
State	Project	Yes	List	State	XYZ Form		
Zip Code	Project	Yes	Numeric	ZipCode	XYZ Form		
Building Department	Project	Yes	Look-Up	BuildingDeptID	Internal	Null	Look-up based on address. If not found, use County/City information and flag for internal review.
Type of Home	Project	No	List	HomeType	XYZ Form		
Sales Price	Project	No	List	SalesPrice	XYZ Form		Required if home type = X
Status	Home	Yes	List	Status	Internal	In progress	
Warranty #	Warranty	No	ID	WarrantyID	Internal		System-assigned once warranty is approved.
Warranty Effective Date	Warranty	No	Date	EffectiveDate	Internal		System-assigns current date once warranty is approved.

3 Data Modeling Techniques





- ▶ Email: info@bridging-the-gap.com
- ▶ LinkedIn: [Bridging the Gap group](#)
- ▶ Twitter: [@LLBrandenburg](#)

Webinar Code: W81966-0015
1 CDU for recertification

